

## Exhibition Calendar

Wednesday, November 5, 2007

Deadline for entries

Monday, December 3, 2007

Artists' notification will be mailed

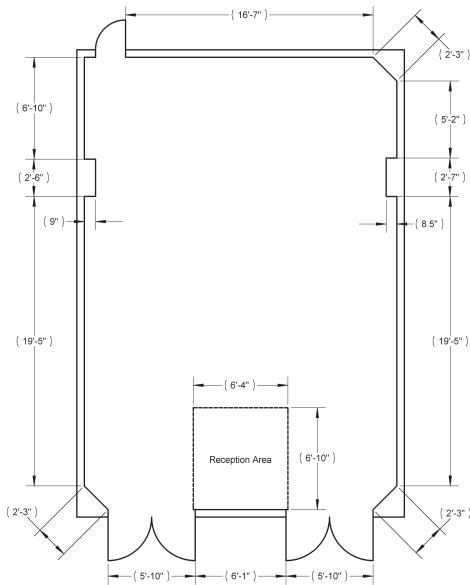
January 30 - February 24, 2008

Exhibition Dates

Thursday, February 14, 2008

Artists' Reception

### Target Gallery Floorplan



Please see "Limitations" for size requirements.

### Entry Checklist

Please be sure you have completed and included all of the following:

- completed entry form
- \$30.00 check or money order  
(\$3.00 additional charge per 35mm slide entered)  
Make checks payable to TFAA.
- CD or slides
- SASE (self-addressed stamped envelope)

## Guidelines

All work must be for sale. A commission of 40% will be taken on all works sold as a result of this exhibition. Payment will be mailed to the artist within 30 days of the exhibition closing. Works are insured while in Target Gallery. Artists are required to sign a Loan Agreement and a Terms & Condition Agreement if accepted. The Target Gallery will keep the slides and images of accepted works and reserves the right to reproduce the images for all media and publicity purposes.

## Delivery

Artists are responsible for shipping their work to the gallery in sturdy, reusable boxes. **Please do not use shipping popcorn.** Return shipping must be prepaid and enclosed with artwork. Neither Target Gallery nor the Torpedo Factory Art Center will be responsible for any damage incurred in transit. Accepted artwork may also be hand-delivered on **Friday, January 18, 2008, between noon and 5 PM.**

## Limitations

Work should be less than 15 feet overall (height + width + length), with no one dimension measuring more than 8 feet. Final measurements must be inclusive of frame, if applicable. Weight may not exceed 150 pounds. All entries must have been conceived and created by the artist submitting the work. All work selected must be ready for exhibit: 2D work must be framed with secure hanging devices; 3D work must be suitably prepared with instructions for installation. The gallery reserves the right to reject work that differs from submitted images.

## Application

The application materials must be received in the Target Gallery no later than **5 pm on Wednesday, November 5, 2007.**



prospectus

## *The Kinetic Image*

January 30 - February 24, 2008

### CALL FOR ENTRIES:

This will be a **New Media** exhibition, featuring technology-based artwork that goes beyond the static digital print. Entries may include video, time-based installation, animation, interactive design, robotics, virtual reality, and kinetic sculptural works. This exhibition is open to all artists nationally and internationally working in all areas of New Media.

JUROR: Patrick Lichty

DEADLINE:

November 5, 2007

[www.torpedofactory.org](http://www.torpedofactory.org)



105 N. Union St.  
Alexandria, VA 22314  
703 - 838 - 4565 x 4

[targetgallery@torpedofactory.org](mailto:targetgallery@torpedofactory.org)

## Juror: Patrick Lichty

Patrick Lichty is a digital intermedia designer, artist, writer, and independent curator of over 15 years. He works in diverse technological media including printmaking, kinetics, video, generative music, and neon. Venues in which Lichty has been involved with solo and collaborative works include the Whitney and Venice Biennales as well as the International Symposium on the Electronic Arts (ISEA). He is Editor-in-Chief of *Intelligent Agent*, an electronic arts/culture journal based in New York City, and featured in the new documentary by the makers of *American Movie*, called *The Yes Men*. He is a professor of Interactive Arts and Media at Columbia College in Chicago, which currently has the nation's largest film department.

### Awards

Cash awards will be given to "Best in Show" and "Honorable Mention" award winners.

### About the Gallery

The Target Gallery, the national exhibition space of the Torpedo Factory Art Center, is run by the Torpedo Factory Artists' Association. Artists on the Target Gallery Committee are responsible for the planning of exhibitions and overall mission of the gallery. The Target Gallery promotes high standards of art by continuously exploring new ideas through visual media in a schedule of national and international exhibitions. The gallery hosts nine exhibits annually--some juried, some curated--featuring a variety of themes and artists. In an effort to keep our perspective challenged, our exhibits are usually composed of artists outside of the Torpedo Factory and represent artistic views from across the nation.

## Directions For Entry

1. Image entry will be PC compatible JPEG digital files and by 35mm slides only. **Review will be by digital image only.** We strongly suggest digital submission. All 35mm slides will be scanned before jury and require an additional \$3 fee per slide. We regret that we cannot review images via email. Images of up to three works may be submitted. Only one detail image per each work may be included. CDs must contain the artist's name on both the actual CD and the case. JPEGs should be no larger than 300 dpi at approximately 4 by 6 inches. All digital files must be in JPEG format and must include the artist's name and title of the submission (smithpainting5.jpg). Please do not use quotations or spaces in file names. Slides must be labeled with the artist's name, title, media, and dimensions. Mark the lower left-hand corner of the front with a red dot.  
  
Video and time-based submissions should be both PC and Macintosh compatible. Submissions must be able to play in standard media viewing programs such as DVD, QuickTime, or Windows Media players (**.MOV files are preferred**). You may NOT submit VHS tapes. **Website links will not be accepted as submissions.**
2. Include a self-addressed stamped envelope (SASE) with sufficient postage for the return of slides or CDs.
3. A non-refundable fee of \$30.00 must accompany each entry form. **All 35mm slide submissions will require an additional charge of \$3.00 per slide.** Checks are to be made payable to the Torpedo Factory Artists' Association.
4. The entry form must be complete and include media, price, and dimension information.

## The Kinetic Image

### ENTRY FORM

Entries must be received no later than:

**WEDNESDAY, NOVEMBER 5, 2007**

artist \_\_\_\_\_  
address \_\_\_\_\_  
city \_\_\_\_\_ st \_\_\_\_\_ zip \_\_\_\_\_  
phone \_\_\_\_\_ Would you like to be added to our exhibition opportunities list? y/n  
email \_\_\_\_\_

#### Entry 1

title \_\_\_\_\_  
media \_\_\_\_\_  
size (framed) \_\_\_\_\_ year executed \_\_\_\_\_  
detail image included? y/n price \_\_\_\_\_  
for gallery use only: ACCEPTED / DECLINED

#### Entry 2

title \_\_\_\_\_  
media \_\_\_\_\_  
size (framed) \_\_\_\_\_ year executed \_\_\_\_\_  
detail image included? y/n price \_\_\_\_\_  
for gallery use only: ACCEPTED / DECLINED

#### Entry 3

title \_\_\_\_\_  
media \_\_\_\_\_  
size (framed) \_\_\_\_\_ year executed \_\_\_\_\_  
detail image included? y/n price \_\_\_\_\_  
for gallery use only: ACCEPTED / DECLINED

I agree to all provisions of entry to this exhibition, including agreement that the artwork selected will be for sale and available for the duration of the exhibition.

signature \_\_\_\_\_ date \_\_\_\_\_

How did you hear about this opportunity?

- Torpedo Factory website  other (please specify)  national publication (please specify)

(please return this section only)