

## Exhibition Calendar

Wednesday, October 1, 2008

Deadline for entries

Tuesday, October 28, 2008

Artists' notification will be mailed

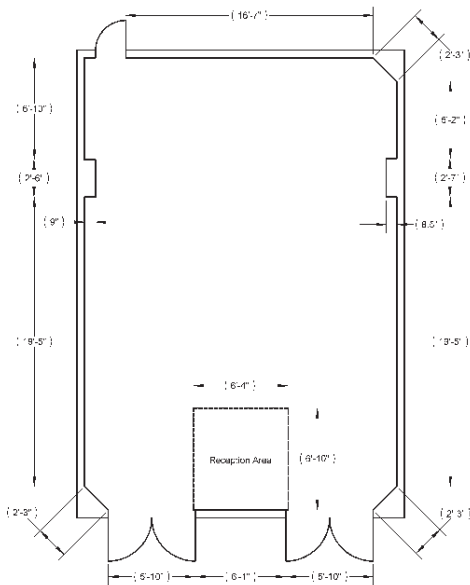
December 11 - January 11, 2009

Exhibition Dates

Thursday, December 11, 2008

Artists' Reception

### Target Gallery Floorplan



Please see "Limitations" for size requirements.

### Entry Checklist

Please be sure you have completed and included all of the following:

- completed entry form
- \$35.00 check or money order (\$3.00 additional charge per 35mm slide entered)  
Make checks payable to TFAA.
- CD or slides
- SASE (self-addressed stamped envelope)

## Guidelines

All work must be for sale. A commission of 40% will be taken on all works sold as a result of this exhibition. Payment will be mailed to the artist within 30 days of the exhibition closing. Works are insured while in Target Gallery. Artists are required to sign a Loan Agreement and a Terms & Condition Agreement if accepted. The Target Gallery will keep the CD of accepted works and reserves the right to reproduce the images for all media and publicity purposes.

## Delivery

Artists are responsible for shipping their work to the gallery in sturdy, reusable boxes. **Return shipping must be prepaid and enclosed with artwork.** Neither Target Gallery nor the Torpedo Factory Art Center will be responsible for any damage incurred in transit. Accepted artwork may also be hand-delivered **with a deadline of December 1, 2008.**

## Limitations

Work can only be a maximum of five inches in any direction. Final measurements must be inclusive of frame, if applicable. All entries must be original and created by the artist submitting the work. All work must be ready for exhibit. Any special requirements or equipment to install piece must be provided by the artist. The gallery reserves the right to reject work that differs from submitted images.

## Application

The application materials must be received in the Target Gallery no later than 5 pm on Wednesday, October 1, 2008.



prospectus

5x5x(5)

December 11 - January 11, 2009

CALL FOR ENTRIES:

*5x5x(5) will be an exhibition that examines work on a very intimate scale. This opportunity will be open to all artists nationally and internationally working in any media with the strict stipulation that the work must fit within the parameters of five inches in any direction.*

**JUROR: Elaine Levin**

**DEADLINE:  
OCTOBER 1, 2008**

[www.torpedofactory.org](http://www.torpedofactory.org)



105 N. Union St.  
Alexandria, VA 22314  
703 - 838 - 4565 x 4

[targetgallery@torpedofactory.org](mailto:targetgallery@torpedofactory.org)

## Juror: Elaine Levin

Freelance contemporary curator, writer, lecturer and critic, Elaine Levin is from Northridge, California. She is a widely published writer and speaker on contemporary ceramics and crafts. She has written over 85 articles in such publications as *Ceramics Monthly*, *Artweek*, *Ceramic Review* (London), *Revista Ceramica* (Madrid), *Sculpture*, and *Kerameiki Techni* (Athens, Greece). She has written over 17 catalog essays, curated 10 exhibitions, juried 7 exhibits, 14 symposia, over 85 lectures at such places as the Smithsonian Institution, Alfred University, National Council for Education in the Ceramic Arts, and 2 documentaries on ceramics.

### Awards

Cash awards will be given to "Best in Show" and "Honorable Mention" award winners.

### About the Gallery

The Target Gallery, the national exhibition space of the Torpedo Factory Art Center, promotes high standards of art by continuously exploring new ideas through visual media in a schedule of national and international exhibitions. The gallery hosts nine exhibits annually--some juried, some curated--featuring a variety of themes and artists. In an effort to keep our perspective challenged, our exhibits are usually composed of artists outside of the Torpedo Factory and represent artistic views from across the nation.

The Target Gallery is open to the public Wednesday through Sunday from noon to 5pm, and every second Thursday of the month until 9pm as a part of Old Town Alexandria's Second Thursday Art Night.

For more info visit [www.torpedofactory.org](http://www.torpedofactory.org) and click on "Target".

## Directions For Entry

1. Image entry will be PC compatible JPEG digital files and by 35mm slides only. **Review will be by digital image only.** We strongly suggest digital submission. All 35mm slides will be scanned before jury and require an additional \$3 fee per slide. We regret that we cannot review images via email. Images of up to three works may be submitted. Only one detail image per each work may be included. CDs must contain the artist's name on both the actual CD and the case. JPEGs should be no larger than 300 dpi at approximately 4 by 6 inches. All digital files must be in JPEG format and must include the artist's name and title of the submission (smithpainting5.jpg). Please do not use quotations or spaces in file names. Slides must be labeled with the artist's name, title, media, and dimensions. Mark the lower left-hand corner of the front with a red dot.
2. Include a self-addressed stamped envelope (SASE) with sufficient postage for the return of slides or CDs.
3. A non-refundable fee of \$35.00 must accompany each entry form. **All 35mm slide submissions will require an additional charge of \$3.00 per slide.** Checks are to be made payable to the Torpedo Factory Artists' Association.
4. The entry form must be complete and include media, dimension information, and be sure to sign and date.
5. If you would like to submit more than three entries per application then each additional entry must include \$10 for each entry over the initial three. Only one detail per entry image allowed.

# 5x5x(5)

## ENTRY FORM

Entries must be received no later than:  
**Wednesday, October 1, 2008**

artist \_\_\_\_\_  
address \_\_\_\_\_  
city \_\_\_\_\_ st \_\_\_\_\_ zip \_\_\_\_\_  
phone \_\_\_\_\_ Would you like to be  
added to our exhibition  
email \_\_\_\_\_ opportunities list? y/n

### Entry 1

title \_\_\_\_\_  
media \_\_\_\_\_  
size (framed) \_\_\_\_\_ year executed \_\_\_\_\_  
detail image included? y/n

for gallery use only: ACCEPTED / DECLINED

### Entry 2

title \_\_\_\_\_  
media \_\_\_\_\_  
size (framed) \_\_\_\_\_ year executed \_\_\_\_\_  
detail image included? y/n

for gallery use only: ACCEPTED / DECLINED

### Entry 3

title \_\_\_\_\_  
media \_\_\_\_\_  
size (framed) \_\_\_\_\_ year executed \_\_\_\_\_  
detail image included? y/n

for gallery use only: ACCEPTED / DECLINED

I agree to all provisions of entry to this exhibition,  
including agreement that the artwork selected will be  
for sale and available for the duration of the exhibition.

signature \_\_\_\_\_ date \_\_\_\_\_

How did you hear about this opportunity?

- Torpedo Factory website  other (please specify)  national publication (please specify)

(please return this section only)