

2012 Open Exhibition Call for Proposals

ENTRY FORM

Deadline for Entry: February 1, 2012

artist _____
 address _____
 city _____ st. _____ zip _____
 phone _____
 email _____
 Add me to your exhibition opportunities list? y / n

Entry Check List

Please be sure you have completed and included all of the following:

- Entry form - completed, and signed.
- \$40 check, money order, or online payment via paypal: targetgallery@torpedofactory.org
- Print out of Proposal and CV- to see an example: www.torpedofactory.org/galleries/targetcallforentry.htm
- CD of images and Proposal / CV
- Return postage and packaging materials.

Works included in the proposal need not be the final works in the exhibition, but they must accurately reflect the quality, subject matter, media, quantity, and general dimensions of the Target Gallery exhibition. Artists may submit up to 30 images for consideration.

signature _____ date _____

How did you hear about this opportunity?

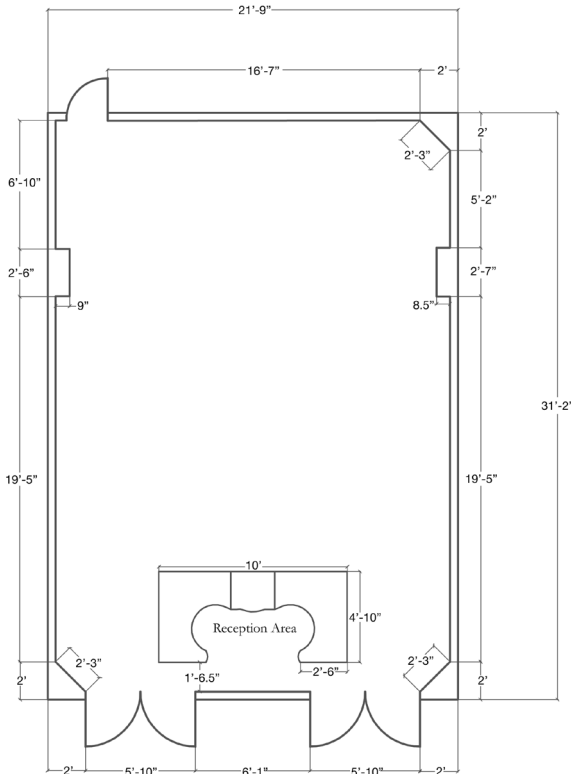
- Torpedo Factory website
- National Publication (please specify)
- Other (please specify)

Gallery Information

About Target Gallery

The Target Gallery, national exhibition space of the Torpedo Factory Art Center, is located on the waterfront in Old Town Alexandria, VA.

The gallery's schedule of exhibitions invites artists from across the country and around the world to participate in shows that have far reaching themes. The themes often focus on the current trends in the art world. The exhibitions challenge our perspective and stir dialogue with our viewers.



Target Gallery	Torpedo Factory Art Center	
Floor Plan: 682 sq ft	Wall Space 79'	Scale 3/16"=10"
Note: Ceiling is 105" high.		
Floor is laminate		
Walls are drywall, homosote, and plywood		

2012 Open Exhibition Call for Proposals

August 4 - September 2, 2012

Deadline for Entry: February 1, 2012

Exhibition Details

This is an Open Call for proposals for an exhibition in the summer of 2012. This call is open to all artists from North America working in all visual media. Proposals for exhibitions by both individuals and groups will be considered.

Awards

The individual or group associated with the chosen proposal will receive a solo exhibition at the Target Gallery from August 4 - September 2, 2012. The artist/s will also receive a stipend and an exhibition catalog.

Contact Information

Phone: 703.838.4565x4

Email: targetgallery@torpedofactory.org

Address: 105 N. Union St., Alexandria, VA 22314

Website: www.torpedofactory.org/target

Hours: Daily 10-6pm, Thursdays 'til 9pm



Directions for Entry

How to Apply

1. Image entry will be PC compatible JPEG digital files only. Review will be by digital image only. We regret that we cannot review images via email. CDs must contain the artist's name on both the actual CD and the case. JPEGs should be no larger than 300 dpi at approximately 4 by 6 inches. All digital files must be in JPEG format and must include the artist's name and title of the submission (smithpainting5.jpg). Please do not use quotations or spaces in file names. (Artists may submit up to 30 images for consideration)

Video and time-based submissions should be both PC and Macintosh compatible. Files should be submitted in .MOV format. You may NOT submit VHS tapes. Website links will not be accepted as submissions.

Written proposals and CVs are to be submitted in hardcopy and digital Word Document format on CD. Please provide a clear and concise description of the work to be exhibited, outlining the main themes and ideas, and describing how the work will be installed in the gallery space.

2. Include a self-addressed stamped envelope (SASE) with sufficient postage for the return of slides or CDs.

Entry Fee and Form Guidelines

A completed entry form and payment MUST accompany the proposal or the entry will be disqualified.

A non-refundable fee of \$40.00 must accompany each entry form. Payment may be in the form of check, cash, money order, or online via Paypal. Checks are to be made payable to the TFAC.

Exhibition Details

Exhibition Calendar

Wednesday, February 1, 2012

Deadline for entries - Entries must be in gallery by 6pm

Late April - Artist Notification

August 4 - September 2, 2012 - Exhibition Dates

Jury Process

A three person panel consisting of artists and art professionals not affiliated with the Torpedo Factory Art Center will review all applications. One non-voting representative from the Target Gallery will also be present during the final group review.

2012 Jurors

Jack Rasmussen is the Director and Curator of the American University Museum at the Katzen Arts Center in Washington, DC. In addition he has also taught painting, curatorial practice, and arts programming, and worked as the university's associate director of development from 1983 to 1987.

Catriona Fraser is an international award winning photographer and the Director of the Fraser Gallery. The Fraser Gallery exhibits the work of local, national and international artists with an emphasis on contemporary realism and photography.

David Page is an award winning, South African born, Baltimore based sculptor. His work is included in The Teaching Collection at St. Mary's College, the permanent collection at the Baltimore Museum of Art and the collection of Nelson Mandela. His work has been exhibited both nationally and internationally including The Touch Gallery at the National Gallery in Cape Town, South Africa, Delaware Center for Contemporary Arts and The Baltimore Museum of Art. He currently teaches at The Corcoran College of Art and Design and is represented by Jordan Faye Contemporary since 2006.

Gallery Guidelines

Guidelines

All work must be for sale. A commission of 40% will be taken on all works sold as a result of this exhibition. Payment will be mailed to the artist within 30 days of the exhibition closing. Works are insured while in Target Gallery. Artists are required to sign a Loan Agreement and a Terms and Condition Agreement if accepted. The Target Gallery will keep the CD of accepted works and reserves the right to reproduce the images for all media and publicity purposes.

Delivery

Artists are responsible for shipping their work to the gallery in sturdy, reusable boxes. Return shipping must be prepaid and enclosed with artwork. Neither Target Gallery nor the Torpedo Factory Art Center will be responsible for any damage incurred in transit. Accepted artwork may also be hand-delivered on Monday, September 3rd between 10AM and 6 PM.

Limitations

Work should be less than 15 feet overall (height + width + length), with no one dimension measuring more than 7 feet. Final measurements must be inclusive of frame, if applicable. Weight may not exceed 150 pounds. All entries must have been conceived and created by the artist submitting the work. All work selected must be ready for exhibit: 2D work must be framed with secure hanging devices; 3D work must be suitably prepared with instructions for installation. The gallery reserves the right to reject work that differs from submitted images.