

## Torpedo Factory Artist of the Year



*Diary of War*

### CMDupré: The Mysterious Other June 10 - July 12

Target Gallery Reception: June 11, 6-8pm  
Gallery Talk: Shauna Lee Lange, 7pm, during reception  
Meet the Artist Reception: July 9, 6-8pm  
Awards Ceremony: 7pm, during reception

*"A vital concept can have a way of refusing boundaries or denying context. It has boundlessness but remains fascinated by detail: feasts on its own intricate findings. It abhors closure; wants constant fussing, unfolding, potential escape routes, disguises, pretense. Art revels in fictions."*

- CMDupré, April 2008

2009 Torpedo Factory Artist of the Year CMDupré presents her solo exhibition *The Mysterious Other* from June 10 - July 12 in the Torpedo Factory's Target Gallery. The collection of visually lush oil paintings explores dark areas of human existence including the grasping horror of war. Through her use of a grid pattern, the artist retells historical narratives from different viewpoints while utilizing varied approaches to painting. Dupré's visual weaving of stories leads the viewer through time, crossing boundaries to examine the commonalities of war and how they leave an inconsolable scar on the human spirit.



*Folie D'Archive*



*Doctoral Studies in the Visual Arts.*

Dupré will still be in Italy for the opening reception of *The Mysterious Other* on June 9, when juror Shauna Lee Lange will discuss Dupré's work and offer her insight into the work on exhibit. Dupré will be present at a July 11 reception for the public to meet the artist.

CMDupré was named Torpedo Factory Artist of the Year by the [Friends of the Torpedo Factory Art Center](#) in January of 2009. Dupré, who has had a studio at the Torpedo Factory for over eight and a half years, was praised by juror Shauna Lee Lange for creating paintings that "achieve visual ecstasy at its best and the work is far beyond the range of her counterparts. The work goes beyond normal convention of color, composition, context, contrast - it's work that goes beyond talent." [Read juror Shauna Lee Lange's full speech entitled "A Mansion Owner's Spirit."](#)

In May 2009, Dupré embarked on studies for the doctorate in visual arts in Italy. She was accepted into the graduate program at the *Institute for*



CMDupré Interview 2008

## Facebook



We've moved from a group to a Fan Page. Join us!

## International and National News

Re-using materials in recession art



[Click to view video](#)

## BBC World News

May 5, 2009  
[View photos from the shoot](#)



[Click to view video](#)

CNN and Headline News Channel  
May 16 & 17, 2009

## Featured Events

**Second Thursday Art Night**  
**Dancing in the Streets**  
Thursday, June 11  
6-9pm - FREE

## Target Gallery News

Target Gallery is the national and international exhibition space of the Torpedo Factory Art Center. [Read the latest Target Gallery news on their blog.](#)

Target Gallery will present CMDupre's *The Mysterious Other* from June 10 - July 12. More information in the article above.



### Art Supply Donation

Target Gallery is collecting supplies for the Charles Houston Recreation Center Summer Art Program through June 29.

[Click here for the wish list on the Target Gallery blog.](#)

## In the Flesh Part II

July 22 - August 30

Reception: August 13, 6-8pm - Gallery Talk: 7pm

Featuring artists from around the country, this exhibition examines trends in contemporary figurative art. The show's juror is Andrea Pollan, founder and curator of the Curator's Office in Washington, DC.

## CALL FOR ENTRIES

### Pandora's Box

Deadline for entries: October 5, 2009

Show Dates: December 10, 2009 - January 10, 2010

Exhibition will feature interpretations of Pandora's Box in relation to modern day issues. The submitted work must be based on a 12-inch box form, but does not have to be contained within the box. Open to artists nationally and internationally.

[Click for more information and prospectus - Apply online for this show!](#)

## Behind the Scenes

### Vertebral Variations in Watercolor

By Rachel Collins, Studio 342

It was probably inevitable that I should paint animal vertebrae; I am after all, my mother's daughter. She was the first in the family to fall in love with the form and feel of the bones. One summer, while hiking in the Adirondacks, she came upon a deer skeleton that had been picked fairly clean. Her first thought was "I wonder if I could put the whole skeleton back together?" And so she did, beginning a fascinating sideline to her already established career as painter, sculptor and teacher, that eventually added a large repertoire of mammal, bird and reptile skeletons to the collections of the Museum of Natural Sciences in Raleigh, NC.

My mother no longer paints or articulates skeletons, as she is one of 5.2 million Americans dealing with Alzheimer's disease. But a few stray bones have found their way into my possession. Their sculptural quality draws me to work with them, along with the abstract patterns of light and shadow created when they are viewed up close.



Vertebra-VII

My first task in making a vertebra painting is staging the vertebra in such a way that the light in my studio (both natural and artificial) plays on the forms to provide interesting shapes. I draw the form as accurately as I can. Then the painting challenges begin. Foremost among these is finding the colors I wish to use, since my models have little obvious local color. I find I must tune in to a range of very subtle variations and figure out how to make the most of them.

Put on your dancing shoes and head to the Torpedo Factory! Enjoy live music and refreshments as you browse open studios and interact with the artists at this free event. Visit Target Gallery from 6-8pm for the reception for CMDupre's show *The Mysterious Other*. From 6:30-8pm The Art League Gallery hosts the reception for the *All-Media Membership Show* and Nancy Pane Fortwengler's solo show, *Fabrications*.

[Second Thursday Art Night information](#)

[Full Calendar of Shows and Events](#)

## The Art League News



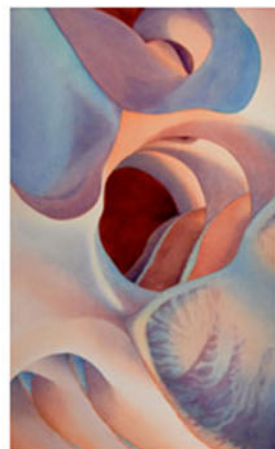
The Aviatrix by Nancy Pane Fortwengler

### In the Gallery

Summer Solo Artist Shows:  
[Fabrications by Nancy Pane Fortwengler](#)  
[Greece Abstracted by Betsy Anderson](#)

### In the School

[Register for Summer Classes and Workshops](#)



Surround

I build the paintings in a series of layers of paint, and each layer must dry thoroughly before the next is laid on. My most essential piece of equipment is my hair dryer! This is not a fast method of painting, but it gets me where I want to go.

Even though the paintings that result from this process look nothing like the bone paintings my mother did (all my paintings are in transparent watercolor, a medium that she never found particularly congenial) I have a strong sense of continuing her life's work, and each painting finished represents a further completion both for me and for my family.

If you are interested in reading more about the vertebra series, you might want to check out the article "Articulation of the Bone" in the June 2009 issue of the magazine *Watercolor Artist*.

[More about artist Rachel Collins](#)



Vertebra-VIII

## Artists News



From Laura's Garden by Elyse Wolf

**Mirella Monti Belshe** is exhibiting 26 of her fragmented books in Florence, Italy. The books are shown as a single artwork under a dome of plexiglas at the prestigious Ken's Art Gallery.

**Elyse Wolf's** colored pencil drawing *From Laura's Garden* was accepted into the Colored Pencil Society of America's 17th International Exhibition, to be held in Atlanta, Georgia, from July through August.

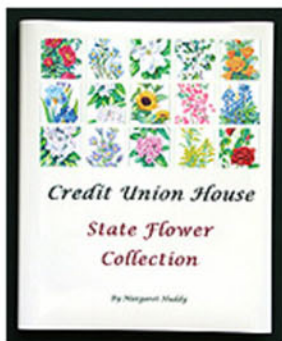
**Michael Borek's** photography exhibition *Wide Asleep-Half Awake* will be shown at Photoworks Gallery in Glen Echo, Maryland from June 13 to July 19 with an opening reception: Saturday, June 13 from 5 to 7pm. *Wide Asleep* was previously exhibited during 2008's FotoWeek DC at the Czech



Free at Last by Michael Borek

Embassy in Washington, DC. Click to read reviews of Borek's FotoWeek showing by the [Washington Post Express](#) and the [Washington Diplomat](#).

Artist **James Dean** (Studio 306) will speak at the National Air and Space Museum, Smithsonian Institution, on July 8 and 13 as part of a panel discussing the Museum's art collection and the current exhibition entitled *Universal Dimensions: The Space Art of Wang Ming*. The discussion will be for the benefit of Docents and Educators from NASM and the Freer Sackler Museums. Dean was the founding director of the NASA Art Program and the former Curator of Art at the National Air and Space Museum.



Margaret Huddy - Book Cover

**Margaret Huddy** has written and illustrated a book of State Flowers published by Credit Union House of Washington, DC.

**Marietje Chamberlain** was elected to participate in PleinAirEaston! This juried exhibition and competition produced by Easton Main Street in partnership with the Avalon Foundation culminates with an awards presentation and multi-day exhibition and sale at the Academy Art Museum, a museum accredited by the American Association of Museums. The plein air event runs from July 20 to 26. She will participate in group shows at American Painting Gallery in Washington, DC, from June to September, and at Broadway Galleries May 23 to June 13.



Margaret Huddy - Book Open

*Bead&Button* magazine sponsors Bead Dreams, an annual juried competition of exceptional bead artistry from around the world. **Zoya Gutina's**

work, *Christmas Eve necklace*, has been juried into the 2009 Bead Dreams in the Seed Bead Jewelry category and will be exhibited at the Bead&Button Show, coming to Milwaukee's Midwest Airlines Center June 5 through 7. The Bead&Button Show is the largest jewelry and bead show in the world.



Christmas Eve Necklace by Zoya Gutina



Eel by Lauren Miko

The exhibition of work by **Marcia Dullum** and **Laurie Fields** at the Red Door Gallery in Richmond, Virginia has been rescheduled. The show will open with a reception on June 5 from 6 to 9pm and runs through July 11.

Printmakers, Inc., Studio 325, presents *One Good Tern and other birds and fish of the sea*, a whimsical show of illustrated limericks in original woodcut and linocut prints. From July 1 to August 31, **Phyllis Cohen** and **Lauren Miko** are blending their styles to give lighthearted interpretation to Cohen's amusing literary works. The opening reception will be Sunday, July 19 from 3 to 6pm and is open to the public.

**Rosemary Feit Covey** collaborated with award-winning BosmaDance to create *Eternal Return*, an evening-length performance exploring the recurring nature of loss throughout human life. They presented a preview of the work at the Torpedo Factory Art Center on April 23 prior to the full performance at the

Source Theatre in Washington, DC, May 8 through 10. Covey displayed an exhibition of related new works entitled *Reality Confront End* from April 29 to June 27 at the Joan Hisaoka Healing Arts Gallery at Smith Farm.



BosmaDance collaboration  
with Rosemary Feit Covey

Covey was also one of ten artists selected to be part of Arthouse1, an art and film event which was held on May 16 in Washington, DC. The event included a feature film selected by the Washington Film Institute and multimedia projections and installations curated by Art Outlet.



Egret by Phyllis Cohen